

# **Nuisance Mosquito Control in an Environmentally Sensitive Area:**

## **City of Ottawa Concerns and Response**



Nick Stow, Senior Planner  
28, March, 2017

# The Area

- Kanata North and the South March Highlands
- Developing suburban community
- Large number of wetland areas:
  - Pre-cambrian, bedrock-controlled wetlands
  - Carp River floodplain
  - Shirley's Bay floodplain



# The Problem

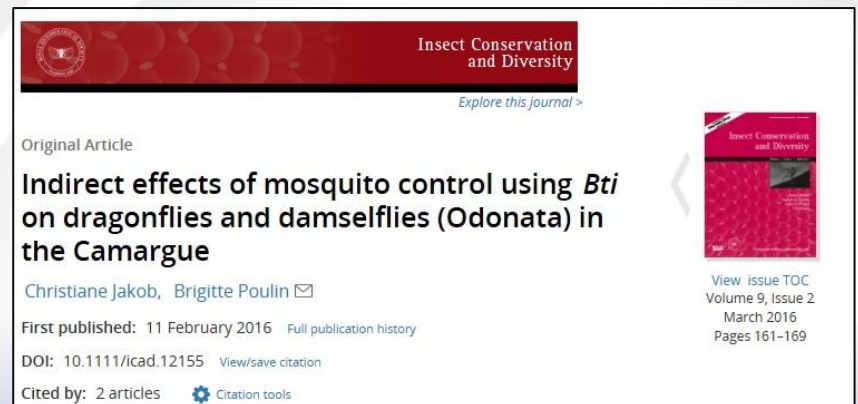


# The Concern



# What are the *hazards* of *Bti* and *Bs*?

- Human health effects?
  - No.
- Non-target health effects?
  - Possibly, under some circumstance.
- Ecosystem impacts?
  - Possibly, but not well studied.



# Risk Assessment

- Probability of negative effects?
  - Low to moderate
- Magnitude of negative effects?
  - Low
- Effects reversible or non-reversible?
  - Reversible

# Conclusion

- Pilot proceed could proceed, but with a science-based, adaptive management program:
  - Monitoring of most likely impacts
  - Robust experimental design
  - Open access to all results

# Implementation

- 4 year pilot control program
- 3 year research program
- Partnership with the University of Ottawa
- Initial focus: non-target impacts on chironomids and other aquatic insects
- Expanded research: microbial community composition



**Questions?**